



St Thrace

Thrace Road, Walthamstow, E17 4RT

£2,000,000

Swimming Pool

2 Bedrooms

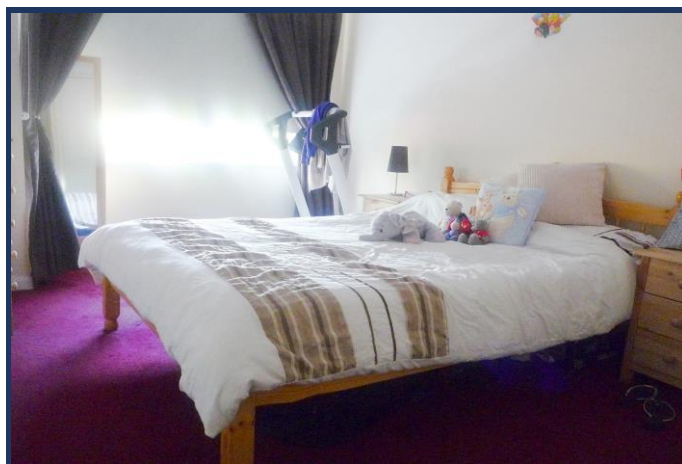
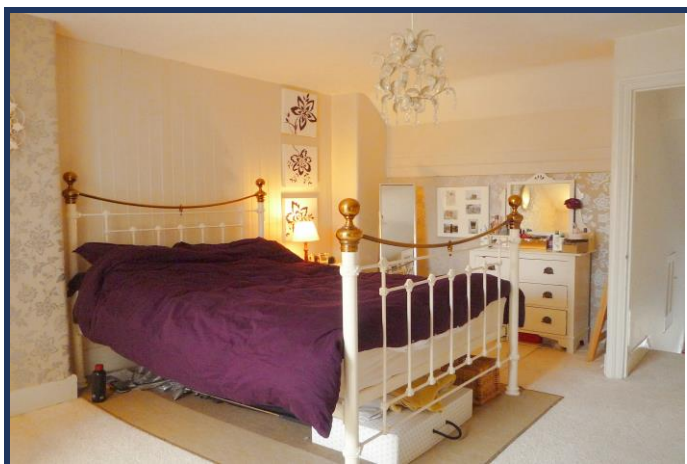
Lounge

Bathroom

Kitchen/Dining Room

Enclosed Rear Garden



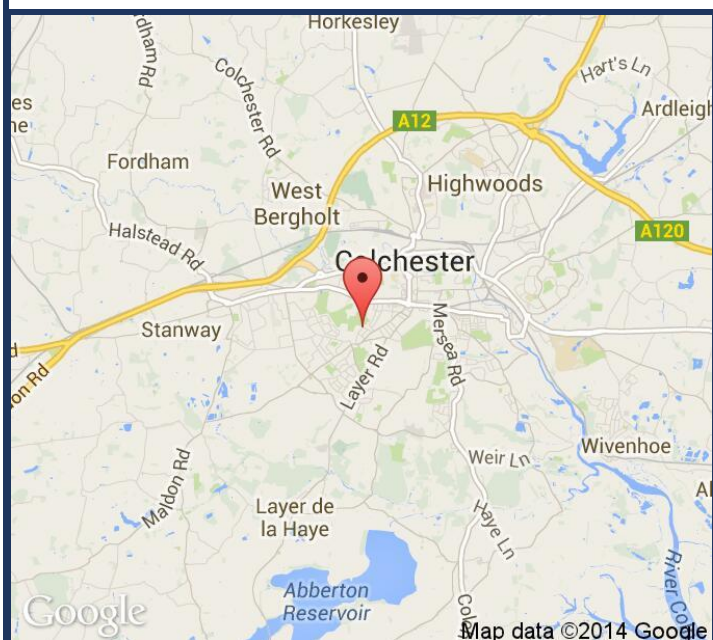


A stunning newly refurbished three bedroom two bathroom flat on the 4th floor in the ever popular City Reach development. The property comprises a spacious and modern reception room, a contemporary fully fitted and integrated kitchen, three good sized double bedrooms with wardrobes and two attractive bathroom suites (one en-suit). The apartment is tastefully decorated throughout with neutral décor, wood floors and floor to ceiling windows in living

0.5m to London Station
 Double Garage
 Close to Tube
 Cinema Room

Energy Efficiency Rating
 Current: A
 Potential: E

The Terms
 Leasehold 30 Years
 Ground Rent: £500.000
 Service Charge: £800.000



LONDON

Henry Wiltshire London
 1-2 Laybourne House,
 Admirals Way, Canary Wharf
 London, E14 9UH

+44 (0) 20 7001 9160

HONG KONG

Henry Wiltshire Hong Kong
 Level 17, China Building
 29 Queen's Road Central, Central
 Hong Kong

(+852) 3978 2671

SINGAPORE



In Association With: *International*
 480 Lorong 6 Toa Payoh #10-01 HDB
 Hub East Wing Singapore 310480
 Singapore LICENSE NO: L3008022 J

(+65) 8233 8847